



2021-2022

SINCE
1968

► **ADS Laminaire**
Air Dépoussiéré Stérile Laminaire

GENERAL CATALOG

ULTRA CLEAN SOLUTION

more than **50**^{ANS}
ADS Laminaire
Air Dépoussiéré Stérile Laminaire

Protection
of User

Product

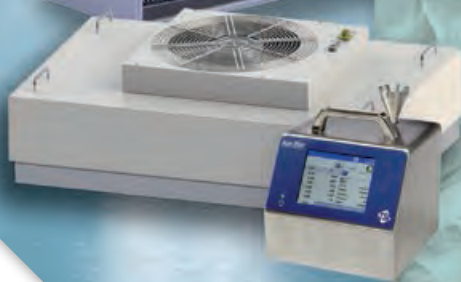
Environment



www.adslaminaire-usa.com



info@adslaminaire.com





*The technical data and the dimensions
are subject to change without notice.
The elements such as photographs and
graphics and information are not
contractual.*

CONTENTS

● Overview

Business organization	6
Business presentation	7

● PRODUCTS

	Decision tree	8
BSC	BIO-PURE	10
BIOSAFETY CABINETS	OPTIMALE	11
	BIOII	12
	PPS	13
CLEAN AREAS	PS / MS	14
	PS(X) / EQL	15
	SBM	16/17
VERTICAL FLOW	VFL	18
	UNIVERS MV	19
	IV GEL SPACE	20
	IV GEL	21
	V	22
HORIZONTAL FLOW	OPTIGEL	23
	OPTIMUM	24
FUME HOOD	BCS	25
	T	26
FAN FILTER UNITS	I GEL / FANJET	27
	CONVOYAIR	28
	S/SP	29
ASPIRING CABINETS	PROTEC I	30
	POWDERJET	31
	C-PURE	32
	UNIVERS MAV	33
	AD	34
AIR SHOWER	AIR SHOWER	35
VARIOUS	GLOVES BOX	36
	Storagebox/ Furnitures	37
	Exhaust fans	38

● OUR SERVICES

	Consumables	39
FILTERS	Flow Air Filters	40
	After sales service	41



R& D



ADS
air dépoussiéré

35-37, rue Smully
40315 LE PRE SAINT GERMAIN Cedex FRANCE
Tel: +33 (0)1 46 44 74 89
Fax: +33 (0)1 46 44 85 56
E-Mail: info@ads-laminar.com



Laminaire
stérile Laminaire

USA: www.ads-laminar.com
E-Mail: info@ads-laminar.com
<http://www.ads-laminar.com>



**DEVICES
& SERVICES**

**Sales Manager (France - Belgium -
Luxemburg - Switzerland**

Thomas PETITJEAN - +33 6 6057 5124
thomas@adslaminaire.com

Export

Bernard BIJAOU
Warda LOUADJED +331 4817 8510
bernard@adslaminaire.com
warda.louadjed@adslaminaire.com

Air filtration department

Daniel MAMANE +33 6 99 04 40 03
daniel.mamane@adslaminaire.com

Consumables department

Cindy HENRY +336 6130 5161
cindy.henry@adslaminaire.com

Account department

Nathalie BERNARD +331 4817 8518
nathalie@adslaminaire.com

After Sales Service

Nora HASSINE +331 4817 8512
nora.hassaine@adslaminaire.com

**Sales Manager (USA - CANADA -
MEXICO)**

Marina CENTENO CASSIN
(312) 622 1697
marina.cassin@adslaminaire.com

Design/development department

Eric FITOUSSI +331 4817 8520
eric@adslaminaire.com

Ralph OBIANG +331 4817 8517

Purchasing department

Etienne CHAUMARD
etienne.chaumard@adslaminaire.com
+331 4817 8519

Q.A department

Carine VOITURIER
carine.voiturier@adslaminaire.com
+331 4817 8516

Logistic department

Yannick Mailly +336 6030 7478
yannick.mailly@adslaminaire.com

ADS LAMINAIRE, a family owned company was established in 1968 by Abraham Bijaoui. It is the first French company to specialize in the field of manufacturing and marketing clean room solutions & Laminar Flow products).

Amongst others, our worldwide clientele are prestigious and leading HI TECH, microelectronics and semi-conductor, companies, hospitals, research centers, universities etc.

IN 1973, ADS Laminaire to meet their customer's growing demanded, expanded their range of products by adding consumables and utilities in the clean room environment

In 1981 ADS Laminaire began manufacturing and marketing air filters.

In 2009 we opened a commercial center in Chicago to cover the American market.

Our after sales service are in charge of maintenance, controls, and validations with capacity to respond quickly in France, European countries and worldwide. We ensure maintenance and quality service of our equipment worldwide

Over the years ADS Laminaire has become a leading authority in cleanroom industry thanks to our long experience but also thanks to the meeting international quality standards, setting challenging goals and excellent achievements as well as a wide range of high quality products.

Certifications and Standards:

ISO 14644-1:

Definition and Classification of Particular Cleanliness of Air.

Standard EN 12469:

Biotechnology: performance criteria for Microbiological Safety Posts

Standard EN 1822-1:

Very high efficiency air filters and

Very low penetration air filters (HEPA and ULPA) **Standard**

NF EN 12128:

Laboratory of Research, Development and Analysis XPX

15-203 / EN 14175:

Laboratory Fume Hood

Standard NFX 15-211:

Recirculating Fume Hood

Standard ISO 16 890:

Air filters for standard ventilation



ISO 9001 certified

HOW TO SELECT YOUR CABINET ?

1



PROTECTION

of PRODUCTS

Cabinet

Clean
environment

PORTABLE
DEVICES

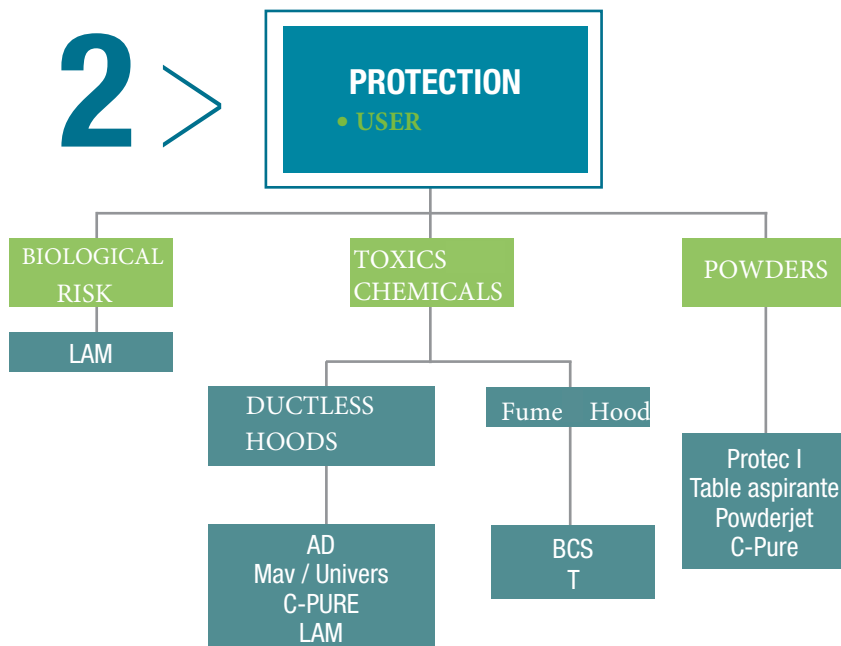
Laminar
Flow Cabinet

Spot
VAL
MV / Univers

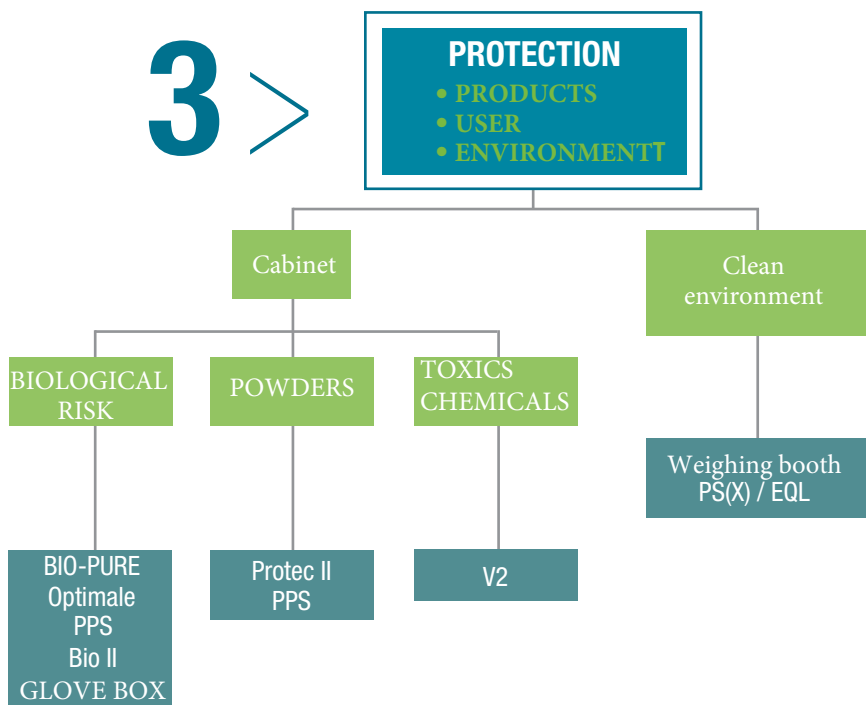
Optimum
Verticale V
IV Gel
Optigel
VFL
IV GEL SPACE

Ceiling Blower
Blowing wall
Convoyair
SBM : I Gel / FANJET

2 >



3 >



BIO-PURE

Biosafety Cabinet Type II

Triple Protection :
Operator
Product
Environment

Complies with standard:
EN 12469 & NSF 49



- ✓ Anticorrosive structure 100% compatible with decontamination products.
- ✓ Automatic flow regulation ECM.
- ✓ Coplast Structure (expanded PVC).
- ✓ Stainless steel 316L, work volume/work surface.
- ✓ Perfect ergonomics: inclined sash window and 2 sides windows.
- ✓ Two fans system.
- ✓ Easy access

★ FLAGSHIP PRODUCT

Microbiological safety stations type II are intended to protect the operator, the product and the environment from any airborne contamination.

	BIO-PURE 9		BIO-PURE 12		BIO-PURE 16		BIO-PURE 18	
	internal	Overall	Internal	Overall	internal	Overall	internal	Overall
Width	915	953	1220	1258	1525	1563	1830	1868
Height	590 to 620	1400	590 to 620	1400	590 to 620	1400	590 to 620	1400
Depth	600	790	600	790	600	790	600	790
Power (MIN) (W)	130		190		250		360	
Power (MAX) (W)	800		800		1200		1200	

OPTIMALE

Biosafety Cabinet Type II



Triple Protection :
Operator
Product
Environment

Complies with standard:
EN 12469 & NSF 49

- ✓ Electric sash window
- ✓ Automatic flow regulation ECM
- ✓ Maintenance from the front
- ✓ UV Lamp



FLAGSHIP PRODUCT

Microbiological safety stations type II are intended to protect the operator, the product and the environment from any airborne contamination.

The OPTIMALE is adapted to the handling of agents that require biosafety level class 1, 2 or 3.



	Optimale 9 NF		Optimale 12 NF		Optimale 16		Optimale 18	
	internal	Overall	Internal	Overall	internal	Overall	internal	Overall
Width	921	971	1226	1276	1531	1581	1836	1886
Height	650	1400	650	1400	650	1400	650	1400
Depth	616	786	616	786	616	786	616	786
Weight(Kg)	190		230		300		350	
Power (W)	1,4		1,4		1,5		1,5	

BIO II

Biosafety Cabinet Type II



Triple Protection :
Operator
Product
Environment

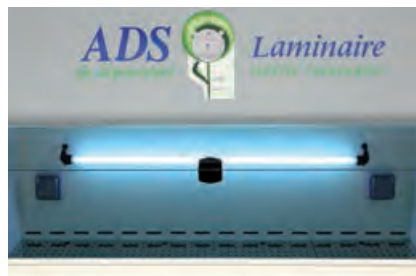
Complies with standard:
EN 12469 & NSF 49

- ✓ compact size
- ✓ Automatic flow regulation ECM
- ✓ flip window
- ✓ UV Lamp

★ **FLAGSHIP PRODUCT**

The BIO II is adapted to handling of agents that require biosafety level class 1, 2 or 3.

	BIO II 9		BIO II 12	
	internal	Overall	internal	Overall
Width	919	922	1226	1229
Height	internal : 500		Overall : 1080	
Depth	internal: 495		Overall : 640	
Weight (Kg)	120		150	
Power (W)	1500			



PPS

Biosafety Cabinet Type II



Triple protection :

Operator
Product
Environment

Complies with standard:
NF EN 12469

- ✓ Electric sash window
- ✓ Bag in Bag out System
- ✓ Maintenance from the front
- ✓ 3 HEPA filters

★ **FLAGSHIP PRODUCT**

Microbiological safety stations type II are designed to protect the operator, product and the environment from any airborne contamination.

The PPS is suitable for handling pathogenic germs of class 1, 2 and 3.

The PPS can be fitted with a marble for accurate weighing at (0,01 mg)



	PPS 9	PPS 12	PPS 16	PPS 18
Useful Width	921	1226	1531	1836
Total width	971	1276	1581	1886
Height	internal : 650		overall : 2200	
Depth	Useful: 616		Overall: 786	
Weight (kg)	270	330	420	490
Power (KW)	1,4	1,4	1,5	1,5

PS / MS

Ceiling "Vertical" / Wall "Horizontal" Laminar Flow



Protection :
Product
GMP: GRADE A

Complies with standard:
ISO 14644

The laminar flow, vertical or horizontal creates an overpressure zone, to guarantee a clean environment in sterile environment, up to ISO 5 (or more)

- ✓ custom made
- ✓ Automatic flow rate control ECM
- ✓ cost effective solution for large volumes



PS(X) / EQL

Weighting booth : sampling booth



The laminar flow blowing ceiling, type PS (x) / EQL is particularly suitable for the handling and packaging of allergenic powders, antibiotics, hormones ...

Weighting / sampling of raw materials.

Triple Protection :

Operator
product
Environment

Comply with standard:
ISO 14644

- ✓ custom made
- ✓ Automatic airflow regulation ECM
- ✓ Perfect sterility of product
- ✓ Integration of screens, printers ...



SBM

Clean environment

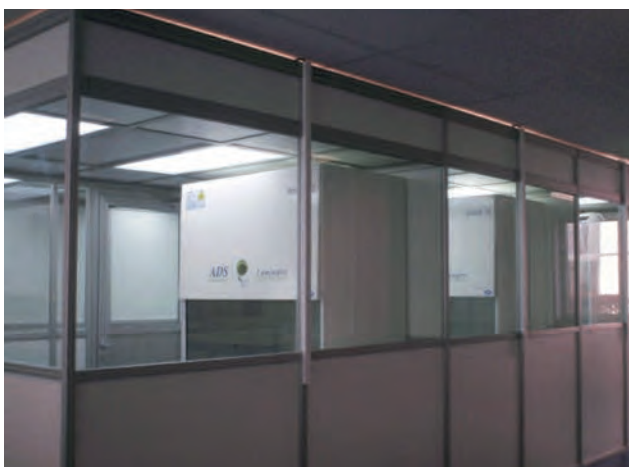
Protection :
Product

Comply with standard:
ISO 14644



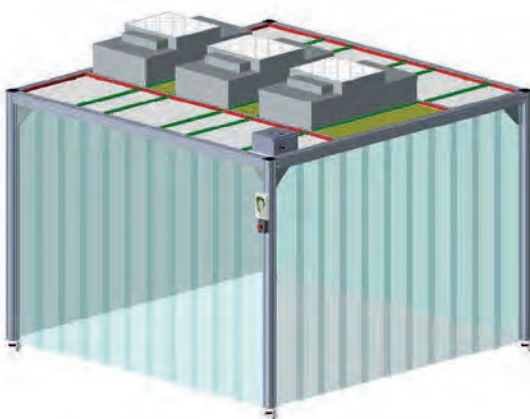
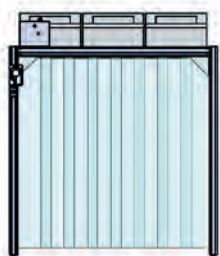
The cleanroom responds to an increasing demand from industry and research laboratories. The major asset is to improve air quality without altering the existing infrastructure.

- ✓ custom made (size, cleanliness level)
- ✓ modularity & Quality
- ✓ cost effective



SBM equipped with BSC cabinets
(biological research)

SBM entrance with material
pass trough



Sketches for approval are delivered before any production. this procedure guarantees very quick setup at installation

VFL

Vertical laminar flow - Class ISO 5



Protection :
Product

Complies with standard:
ISO 14644

- ✓ High working height
- ✓ Economic solution Structure
- ✓ Structure Coplast/PVC antistatic

The VFL is a vertical flow cabinet manufactured in COPLAST.

COPLAST is an ultra clean expanded PVC for easy cleaning and decontamination. Its properties allow it to be installed in clean room and the handling of sensitive products.

The filtration system based on a self-regulating unit type FANJET, guarantees a work in sterile and clean environment of ISO 5.

	VFL 9		VFL 12		VFL 18	
	internal	Overall	internal	Overall	internal	Overall
Width	905	945	1220	1260	1810	1850
Height	internal : 790		OVERALL : 1285			
Depth	761					
Weight (kg)	60		80		120	
Flow Rate	750		990		1500	

UNIVERS MV

Vertical flow cabinet - Class ISO 5



Protection :
Product

Complies with standard:
ISO 14644

- ✓ Manual regulation
- ✓ Economical solution
- ✓ Glass volume
- ✓ Flip window

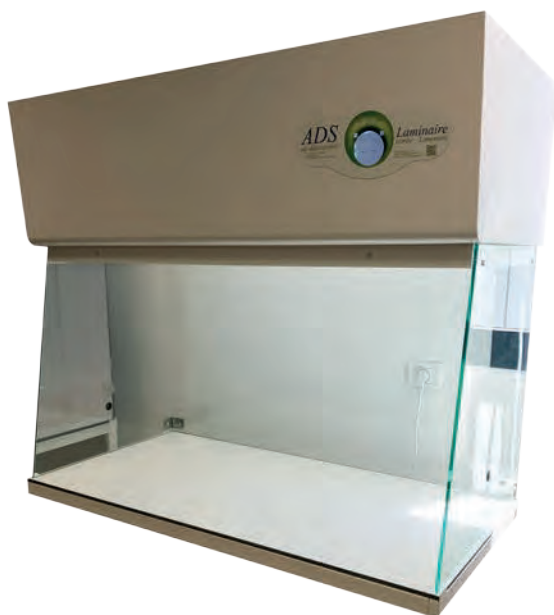
The cabinet ISO class 5, are designed to protect the product thanks to a vertical flow of sterile air.

The enclosure is easy to install and can be installed by you.

	UNIVERS MV 9	
	internal	Overall
Width	905	925
Height	700	1030
Depth	592	600
Weight (kg)	30	

IV GEL SPACE

Vertical laminar flow - Class ISO 5



Protection :
Product

Complies with standard:
ISO 14644

- ✓ ECM regulation
- ✓ Full front opening
- ✓ Glass volume

The enclosures Type IV GEL consist of a blowing and filtration unit, guaranteeing work in a sterile environment.

The cabinets class ISO 5 are designed to protect the handling thanks to a vertical air flow.

The filtration system based on a self-regulating unit type FANJET, guarantees a work in sterile and clean environment of ISO 5.



	IV GEL SPACE 9		IV GEL SPACE 12		IV GEL SPACE 16		IV GEL SPACE 18	
	internal	Overall	internal	Overall	internal	Overall	internal	Overall
Width (mm)	885	930	1190	1223	1556	1573	1792	1825
Height (mm)	internal : 650				OVERALL : 1015			
Depth (mm)	internal : 590				OVERALL : 600			
Height base(mm)	1870							
Weight (Kg)	80		100		130		150	

IV GEL

Vertical laminar flow - class ISO 5



Protection :
Product

Complies with standard:
ISO 14644

- ✓ ECM regulation
- ✓ Full front opening
- ✓ Glass volume

The enclosures Type IV GEL consist of a blowing and filtration unit, guaranteeing work in a sterile environment.

The cabinets class ISO 5 are designed to protect the handling thanks to a vertical air flow.

**Other dimensions: please consult us.*

	IV GEL 6/9		IV GEL 6/12	
	internal	Overall	internal	Overall
Width	869	905	1187	1210
Height	INTERNAL : 650		OVERALL : 1030	
Depth	INTERNAL : 592		OVERALL : 595	
Weight (Kg)	60		80	
Flow rate (m3/h)	750		990	

V

Vertical flow cabinet - class ISO 5



Protection : Product

Complies with standard::
ISO 14644

- ✓ 3 possible airflow schemes
- ✓ ECM regulation
- ✓ made in COPLAST

The V is a vertical flow enclosure made of COPLAST.

COPLAST is an ultra clean expanded PVC for easy cleaning and decontamination. Its properties allow it to be installed in clean rooms and allow the handling of sensitive products. Optimum is handling protection thanks to a laminar air flow of class ISO 5.

	V 9		V 12		V 16		V 18	
	internal	Overall	internal	Overall	internal	Overall	internal	Overall
Width	921	957	1226	1262	531	1567	1836	1872
Height	OVERALL : 1370 / 2270 on base							
Depth	INTERNAL : 658 OVERALL : 766							

OPTIGEL

Horizontal flow cabinet - Class ISO 5



Protection :
Product

Complies with standard:
ISO 14644

- ✓ Opens completely
- ✓ ECM regulation
- ✓ Plexiglas side windows
- ✓ Stainless steel work surface

The enclosure Type OPTIGEL consist of a blowing and filtration unit. Optimum handling protection thanks to a sterile air flow of class ISO 5 .

	OPTIGEL 9		OPTIGEL 12		OPTIGEL 18	
	internal	Overall	internal	Overall	internal	Overall
Width	920	925	1225	1250	1820	1840
Height	INTERNAL : 550 OVERALL : 813					
Depth	INTERNAL : 550 OVERALL : 911					
Height base	1740					
Weight (kg)	80		100		150	

OPTIMUM

Horizontal Laminar Flow cabinet - Class ISO 5

Protection :
Product

Complies with standard:
ISO 14644

- ✓ Automatic regulation ECM
- ✓ Electric sash curtain
- ✓ Volume in COPLAST 12
- ✓ available sizes

	Width		Height	
	internal	Overall	internal	Overall
9	921	959	616	1159
12	1226	1264		
16	1531	1569		
18	1836	1888		
91	921	959	768	1311
121	1226	1264		
161	1531	1569		
181	1836	1888		
92	921	959	921	1464
122	1226	1264		
162	1531	1564		
182	1836	1874		

The cabinets Type Optimum are designed to protect the product, thanks to a horizontal laminar airflow of class ISO 5.

There are 12 models of Optimum.

The Optimum is made of COPLAST expanded PVC ultra clean and smooth, allowing an easy cleaning and decontamination. Its properties allow it to be installed in clean rooms and allow handling of sensitive products.

BCS

Extraction Fume hood

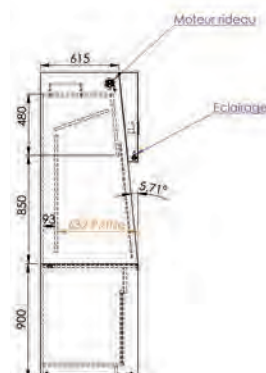
Protection :
Operator

Complies with standard:
EN 14175

- ✓ Inclined sash window
- ✓ Electric glass
- ✓ Automatic Regulation ECRO Type
- ✓ Structure COPLAST
- ✓ No maintenance

The BCS is an Extraction Fume Hood with vertical flow made in COPLAST. The fume hoods ensure the protection of the user and its environment thanks to a air negative pressure of the work area.

Designed from non-particle-resistant, chemical-resistant materials, they can integrate into a controlled atmosphere zone.



	BC 9		BC 12		BC 16		BC 18	
	internal	Overall	internal	Overall	internal	Overall	internal	Overall
Width	921	957	1226	1262	1531	1567	1836	1872
Height	internal : 1200				OVERALL : 1370			
Depth	internal : 660				OVERALL : 765			

T

Extraction station

Protection :
Operator

- ✓ No maintenance
- ✓ Custom made

TPL version with ventilated cupboard

The T is designed to protect the user and its surrounding environment by means of an exhaust system. Made of non-particle-generating materials, they can be installed directly in clean rooms.

The optimization of the dimensions makes it possible to integrate in any type of laboratory, even low ceiling.

	T 81		T 82		T 83		T 84	
	internal	Overall	internal	Overall	internal	Overall	internal	Overall
Width	784	800	784	800	1204	1220	1484	1500
Height	267	275	internal : 642		OVERALL : 650			
Depth	internal : 340				OVERALL : 590			
Diameter	125		160		200		200	
Flow rate (m^3/h)	300		700		1000		1200	

I GEL / FANJET / IPS

Self-contained filtration box - FFU

The air is sucked through a G3 pre-filter by a powerful and quiet motor-driven fan.

The airflow is filtered by a HEPA filter (ULPA option). The MONOBLOC system guarantees the entire box.

The automatic flow control makes it possible to compensate for the clogging of the absolute filter and thus to ensure the constant air flow.

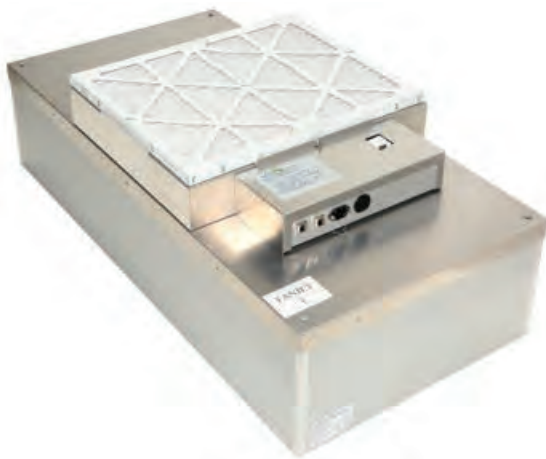
Protection :
Product

Complies with standard:
ISO 14644

I GEL



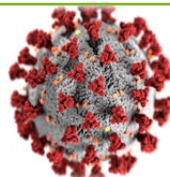
FANJET



- ✓ custom made
- ✓ ECM regulation
- ✓ Blue gel gasket for RSR Maintenance
- ✓ (with IGel 6/6 or 6/9 or 6/12)

- ✓ Customized adaptation
- ✓ Automatic regulation
- ✓ ECM regulation
- ✓ Fanjet 6/6; 6/9; 6/12

EPURE



PROTECTION CONTRE LES VIRUS ET LES POLLENS ULTRA-FILTRATION ET STÉRILISATION UV – HEPA 99,999% À 0,3µm

Stand-alone device, a simple 230V mono socket is sufficient.

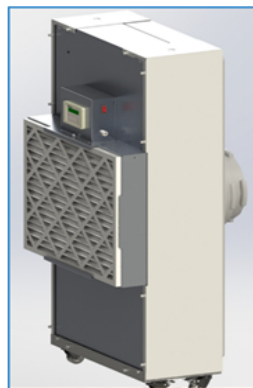
Thanks to our 50 years of experience and our mastery of airborne contamination, the ADS LAMINAIRE teams were able to develop an ultra-filtration system in record time and decontamination of ambient air adapted to fight against the pandemic. Depending on the model chosen, the filtration capacity will vary from 20m² to over 100m².

Applications

- Classrooms / refectories
- Medical offices
- Examination rooms
- Premises open to the public (shops)
- Housing / Retirement home
- Concert halls / Cinemas / Theaters

Working principle

The air is sucked through a grille in a G4 pre-filter (90% efficiency for particles of 10µm) stopping dust and other medium sized particles. He is then guided to the HEPA H14 filtration box (absolute filter) with an efficiency greater than 99.999% @ 0.3µm. A germicidal UV tube (254 nanometers) will continuously sterilize the filtration plenum in which all the fine particles carrying any pathogenic microorganisms have been trapped. This device is equipped with casters, making it easy to move the scrubber.



EPURE 6/12

	Width	Height [mm]	Depth	Speed regulation	Flow rate [m ³ /h]	Charcoal Carbone filter	UV
EPURE 36	305	610	250	0-100%	300	OPTION	Included
EPURE 612	605	1300	350	Automatic	600 - 1200	OPTION	OPTION

CONVOYAIR

Modular box with laminar flow



Laminar flow boxes designed to be integrated into customized structures.

Structure 100% Stainless steel 304 L (option 316)



Protection :
Product

Complies with standard:
ISO 14644

- ✓ Custom made
- ✓ Economic
- ✓ stainless steel structure
- ✓ Freestanding

Examples of configurations



OPTIONS:

- internal lighting
- aluminum legs
- stainless steel legs

CONVOYAIR CX 6/9		CONVOYAIR CX 6/12		CONVOYAIR CX 9/9	
internal	overall	internal	overall	internal	overall
Lenght (mm)	915 1055	1220 1360		915 1055	
Width (mm)	610 680	610 680		915 1055	
Height (mm)	605	605		605	
Weight(Kg)	60	80		80	

S / SP

Mobile ultrafiltered laminar flow -class ISO 5



Protection :
Product

Complies with standard:
ISO 14644

- ✓ Mobile
- ✓ Allow to put premise in positive pressure
- ✓ Ultra-filtered air

The S-type units are designed to put an ultra-filtered room air in positive pressure in order to reduce their dusting rate very effectively and very simply.

The integrated blower in the wall blows an ultra-filtered air inside the room. This air flow creates a barrier which prevents external particles from entering the room. This ensures the controlled environment thanks to air renewal in the room.

	S 3/3	S 3/6	S 3/9	S 3/12	S 6/6	S 6/9	S 6/12
	Dimensions in mm						
Width	350	350	350	350	650	650	1260
Height	350	650	950	1260	650	950	650
Depth	400	400	400	400	630	630	630
Flow rate	150	300	450	600	600	900	1200

PROTEC I

Horizontal vacuum station / Weighing station



Double Protection : Operator Environment

- ✓ Structure in COPLAST
- ✓ Manual or auto control
- ✓ Glass volume

This hood in negative pressure is designed to protect the user and its surrounding environment from any aero-contamination, thanks to a system of horizontal suction on an absolute HEPA filters. PROTEC I are particularly recommended for the handling of powders and harmful products ...

PROTEC I can be installed on a bench or on a base.

	PROTEC 81		PROTEC 12		PROTEC 161	
	internal	Overall	internal	Overall	internal	Overall
Width	775	825	1210	1260	1515	1565
Height	internal : 662			OVERALL 1150		
Depth	internal : 520			OVERALL : 880		
Weight	120		150		180	
Flow rate	900		1400		1700	

POWDERJET

Horizontal safety bench / Weighing station

Double Protection : Operator Environment



- ✓ Full opening
- ✓ ECM regulation
- ✓ Economic solution
- ✓ Stainless steel worktop

Negative pressure cabinets are designed to protect the user and its surrounding environment from all airborne contamination by means of a horizontal suction on an absolute filtration system. POWDERJET is particularly recommended for the handling of powders and harmful products...

	POWDERJET 9		POWDERJET 12		POWDERJET 18	
	internal	Overall	internal	Overall	internal	Overall
Width	920	925	1225	1250	1820	1840
Height	internal : 550		OVERALL : 813			
Depth	internal : 550		OVERALL : 911			
Height with base	1740					
Weight	80		100		150	

C-PURE

Recirculating Fume Hood

CONTRÔLÉ PAR
LABORATOIRE
INDÉPENDANT



Double Protection :
Operator
Environment

Complies with standard:
NFX 15211

- ✓ Structure in polycarbonate and painted steel
- ✓ Control panel 2 touches
- ✓ Easy maintenance
- ✓ Holding tank in PPH

The C-PURE Recirculation Fume Hood is intended for the protection of persons handling dangerous substances from Category 1, 2 and 3 (CMR) and products which have an exposure limit value (ELV).

- Active carbon filters
- HEPA Filters



	C-PURE 9	C-PURE 12	C-PURE 16
Width	966	1166	1566
Height	internal : 855		OVERALL : 1150
Depth	internal : 520		OVERALL : 577
Weight	80	100	120
Flow Rate	250		

UNIVERS MAV

Recirculating Fume Hood
Adsorption on Activated Carbon
Filter

Double Protection :
Operator
Environment

Complies with standard:
NFX 15211

- ✓ Self-assembly structure
- ✓ Manual regulation
- ✓ Glass volume
- ✓ tilting frontal window



The Recirculating Fume Hood, type UNIVERS MAV, is intended to protect the user and its environment close to volatile, harmful or malodorous products thanks to a system of vertical aspiration on activated carbon.

	Univers MAV 6		Univers MAV 9	
	internal	Overall	internal	Overall
Width (mm)	600	620	905	925
Height (mm)	700	1030	700	1030
Depth (mm)	592	600	592	600
Weight (kg)	25		30	

AD

Recirculating Fume Hood
with Horizontal suctionDouble Protection :
Operator
Environment

Complies with standard:
NFX 15211

- ✓ Structure in COPLAST
- ✓ Manual or auto control
- ✓ Large working area
- ✓ Active carbon filter with high absorption capacity

The AD-type recirculating Fume Hood is designed to protect the user and its surrounding environment from volatile, harmful or malodorous products thanks to a horizontal aspiration system on activated carbon.

AD is recommended for handling chemicals such as acid, alcohol, solvents, etc.

	AD 8		AD 12		AD 16	
	internal	Overall	internal	Overall	internal	Overall
Width	733	823	1210	1210	1515	1565
Height	internal : 640		OVERALL : 1150			
Depth	internal : 520		OVERALL : 880			
Total weight	80		120		150	
CA Weight	30		60		60	

AIR SHOWER

Clean environment access / Clean room



Double Protection : Operator Environment

- ✓ Custom-made structure in COPLAST
- ✓ Programmable robot
- ✓ From ISO 8 to ISO 5
- ✓ Option stainless steel

Air showers are used before entering clean environment or clean room, the air shower ensures a complete dedusting of the outfits.

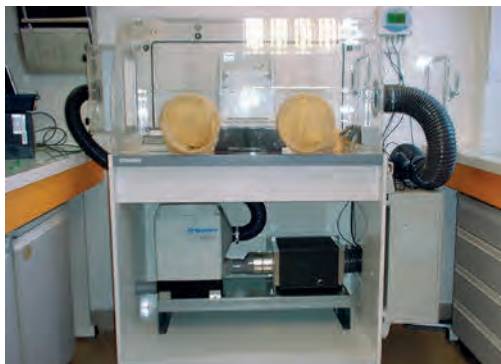
This process can also decontaminate users who have manipulated powders at the exit of production zones.



Glove Box

Protection : Operator Product

- ✓ Custom structure with option
- ✓ Latex / Neoprene / Butyl Gloves
- ✓ Pass-through equipment



The glove box can isolate critical products from oxydation.

The structure of methyl methacrylate gives high resistance to corrosive agents and offers total visibility.

The structure can be made of stainless steel or COPLAST.

Note :

Realization of custom made structure according to special request .

- Nitrogen sweep
- Flowmeter
- Pass-through for material introduction - in / out, trash.

STORAGE BOX AND FURNITURE

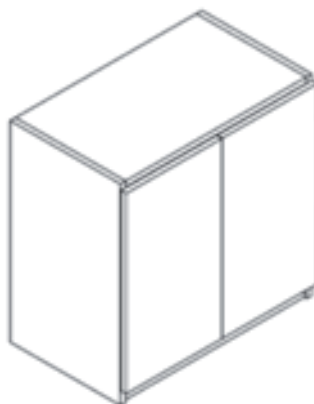
Storage and furniture in clean environment



Protection : Product

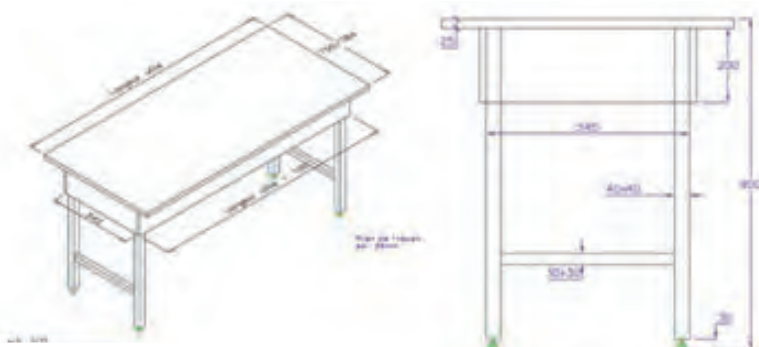
- ✓ Custom structure with options
- ✓ COPLAST / Stainless steel /
- ✓ GLASS / PLEXIGLAS

The boxes are designed for storage of sample in a neutral environment (pure gases) or to keep them protected from dust.





Complete range of stands for each hood.
example: **Optimale16** base



We offer the following furniture:

(Photo on request)

- BENCH / WORK SURFACE
- Shelves
- Cloakrooms
- Shoe benches
- Cupboard
- Lockers
- Wardrobes

EXHAUST FANS

for corrosive fluids

Aeraulic extraction



These fans are designed for the ventilation of chemical cabinets, fume hoods, etc. They are particularly suitable for the extraction of corrosive vapors.

Réf.	Technical data				
	Power kW	Rotation speed (Rpm)	Connection diameter	Weight kg	Weight kg
ADS 202	0.18	2750	Ø 160	9	17
ADS 254	0.12	1370	Ø 200	10	18
ADS 242	0.37	2800		13	24
ADS 314	0.25	1400	Ø 250	19	30
ADS 312	1.50	2850		26	45
ADS 354	0.37	1400	Ø 280	23	34
ADS 352	2.20	2870		32	51
ADS 404	0.55	1410	Ø 315	33	47
ADS 402	5.5	2850		33	47
ADS 454	1.10	1410	Ø 355	40	61
ADS 452	3.0	2860	Ø 355	37	72

Consumables / Disposables

Garnment / Wipes / SWABS / MATS

Consumables and Disposables are included in the wide range of clean room products we can offer to our customers and include garments, wipes, swabs, mats etc.

ADS LAMINAIRE has chosen a USA supplier who has been manufacturing industrial wipes for more than 100 years and who has specialized since 1970 in the field of ultra cleanliness.

GARNMENT



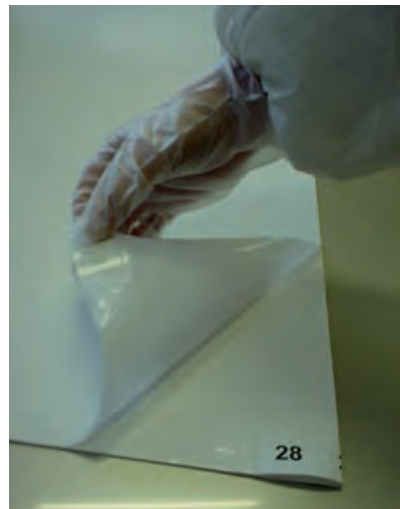
SWABS



WIPES



STICKY MATS



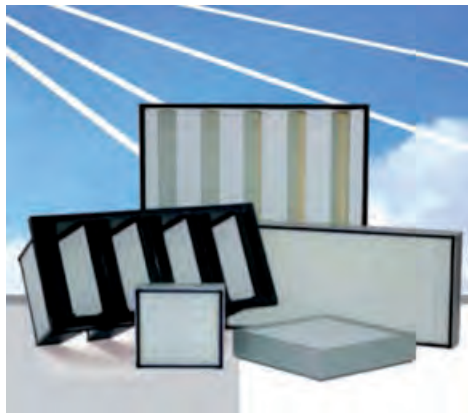
A fully detailed catalogue of consumables and disposable is available on request

FLOW AIR FILTERS

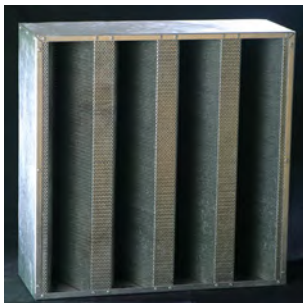
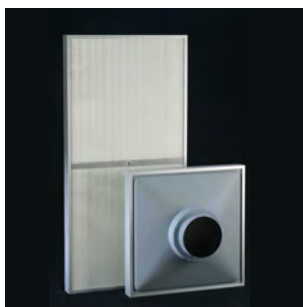
Filters

With more than 50 years of experience in designing and producing a complete range of filters we can offer

- Expertise and know how at your disposable
- Competitive prices
- Standard and custom made filters
- Large warehouse in Aulnay Sous Bois, France with standard filters in stock (near CDG Paris Airport)
- Due to our design office and manufacturing plant, Flow Air Filters, are able to meet specialized an customized filter requests



A fully detailed catalogue of consumables and disposable is available on request



More than 10000 air filters in inventory for immediate delivery according to EN 1822 & ISO 16890.

SAV

Maintenance / Control & Validation

Speed control

Equipment: Hot Wire Anemometer

Objectives: To carry out a mapping of the speeds and to check the laminarity of the airflow.

Measure frontal airflow velocity. Determine flow rates and hourly turnover rate.

Equipment to be controlled: Laminar flow cabinets, biosafety cabinets, clean rooms, blowing ceilings, fume hoods, recirculating fume hoods.

Smoke test: With Smoke tube.

Particle counting

Used Equipment: Laser particle counter

Objectives: To determine the dust class of an area.

Demonstrate leakage (by scanning filters) or contaminated areas.

Equipment to be controlled: Laminar flow cabinets, biosafety cabinets, Clean rooms, Blowing ceilings.

Applicable standards: ISO 14644, GMP

Other controls (please contact us)

- Qualifications (IQ/OQ/PQ)
- Sound level
- LIGHT intensity
- Bacteriological control
- Temperature / Hygrometry
- Saturation test of activated charcoal filters - SF6 gas confinement test

Spare parts

Quick response to requests or needs due to the large stock available in our warehouse in Aulnay Sous Bois warehouse

- 3000 Absolute filters (standard dimensions)
- 10000 Prefilters
- 500 Fans
- 500 electronic cards
- Various

Emery Integrity Test (option):

Equipment: Spectrophotometer Aerosol Generator (product used: Emery

3004)

Objectives: leak test of the filters by looking for leaks on the filter media and the frame.

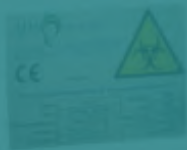
Material to be controlled: Laminar flow cabinets, biosafety cabinets, Clean rooms, Blowing ceilings.

Current standards: ISO 14644, EN 12469

Maintenance

- Change filters (Absolute, pre-filters, activated carbon)
- Adjustment, compliance
- Decontamination (mandatory for any work on a station used for the manipulation of pathogenic germs)
- trash of the filters for destruction with issuance of a neutralization certificate
- Various repairs, parts change - Technicians specializing in laminar flow and clean rooms
- Detailed control reports
- Calibration certificates for all our measuring devices.

PPS 12





ADS LAMINAIRE FRANCE

34 Rue Maurice de Broglie
ZI Les Mardelles
93600 Aulnay-Sous-Bois | France
Tél : 01 48 17 85 10
Fax : 01 48 17 85 11



info@adslaminaire.com



www.adslaminaire.com

ADS AIR FILTERS USA

17 NORTH STATE STREET
SUITE 1710
CHICAGO, IL 60602
USA
Tél : (312) 873 1110



marina.cassin@adslaminaire.com



www.adslaminaire-usa.com

