

CA Filter

Charcoal-Carbone Filter

Gas adsorption of chemical contamination

The CA filter is used for the filtration of chemical contamination specific to the medical, pharmaceutical and electronic fields in order to guarantee concentrations of an acceptable level downstream of the filters.

The CA filter can also be used for applications in conventional air handling systems to reduce pollution levels (odors, volatile organic components, etc.).

The AC filter allows a significant reduction in energy consumption (less fresh air to be treated). Note that the AC filter has a high resistance to chemicals, the possibility of recharging as well as it's producing a low pressure drop.

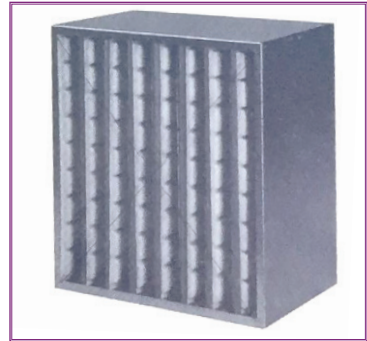
Application

- Treatment of solvents or other harmful vapors before extraction
- Deodorization
- Fresh air filtration before injection into the air conditioning circuit

Benefits

- Ease of installation
- Economical to resolve odor issues
- Filter panels with particle prefilter
- Ideal for air recovery in clean rooms and mini environments

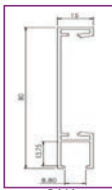
Option: Galvanized steel frame from 30 to 110 in 10mm intervals



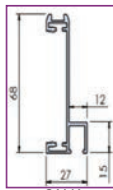
CA-125

Construction

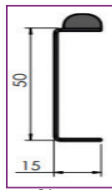
- Galvanized steel frame
- Activated carbon granules retained between 2 perforated grids and filter media
- Dihedral construction for high flow filters (above 200mm thick)



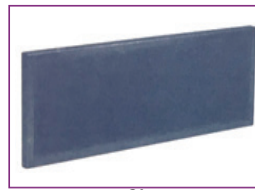
CAK



CALK



CA



CA

Reference	Construction	Dimensions [mm]	Coal thickness [mm]	Flow / ΔP nominal [m³/h/Pa]	Mass of coal [kg]	Weight [Kg]
CA-33	Sign	305×305×70	65	70/90	2.5	4
CA-36	Sign	305×610×70	65	140/90	5	8.2
CA-37	Sign	305×762×70	65	170/90	7	12
CA-39	Sign	305×915×70	65	210/90	9	14.5
CA-66	Sign	610×610×70	65	280/90	10	12.9
CA-25-125	Dihedral	290×590×200	25	850/120	5	10
CA-55-125	Dihedral	590×590×200	25	1700/120	10	20
CA-36-125	Dihedral	300×600×200	25	850/120	5	10
CA-66-125	Dihedral	600×600×200	25	1700/120	10	20
CALK-36	Sign	355×663×70	65	140/90	5	8.5
CALK-39	Sign	355×920×70	65	210/90	8	9.5
CALK-612	Sign	562×1172×80	65	560/90	20	25

* Filters are available in any specific size on request